

Monthly Report No. 042

September 27, 2024 – October 31, 2024

KAPALAMA CONTAINER TERMINAL WHARF AND DREDGING Job HC 10498 Honolulu Harbor, Oahu, Hawaii

Prepared for:



State of Hawaii
Department of Transportation
Harbors Division

Prepared by:



Harbors Project No. H.C. 10498

MONTHLY REPORT NO. 042

Period of September 27 – October 31, 2024
Kapalama Container Terminal Wharf and Dredging
Honolulu Harbor, Oahu, Job HC 10498
State of Hawaii, Department of Transportation, Harbors Division
Contract No. 69245

A. PROJECT SUMMARY

Project:	Kapalama Container Terminal Wharf and Dredging
Project Number	HC 10498
Location	Honolulu Harbor, Oahu
Owner	State of Hawaii Department of Transportation; Harbors Division
Design Consultant	Moffatt and Nichol
General Contractor	Kiewit Infrastructure West Co.
Construction Manager	Yogi Kwong Engineers, LLC
Notice to Proceed Date	January 4, 2021
Contract Completion Date	April 4, 2024 (To Be Amended) July 31, 2025 (Pending New Contract Amendment)

B. CURRENT PROJECT SCHEDULE – ALL DATES SUBJECT TO CHANGE WITHOUT NOTICE (See next page)

MAJOR ACTIVITY:	COMPLETION DATES AS OF KIWC OCTOBER SCHEDULE:					DD-MON-YYYY: ACTUAL COMPLETION DATE (Month Year) = Anticipated Completion Date** [NOTE: <u>ALL</u> ANTICIPATED DATES ARE SUBJECT TO CHANGE WITHOUT NOTICE]
	PIER 41	PIER 42	SNUG HARBOR	PIER 43	HC 10502 (Ph 1)	
HDD Submarine Water Line - Completed	N/A	N/A	N/A	21-July-2023	N/A	
<i>Mass Grading</i>	13-May-2021	06-July-2021	N/A	8-Aug-2023	N/A	
Landside Demolition - Completed	13-April-2021	27-April-2021	N/A	16-Feb-2022	N/A	
In-Water Demolition - Completed	29-Oct-2021	N/A	19-Nov-2021	N/A	N/A	
<i>Stone Columns (Pre-drill)</i>	06-Oct-2021	5-Aug-2021	6-July-2022	31-Aug-2023	N/A	
<i>Stone Columns (Installation)</i>	14-Oct-2021	12-Aug-2021	6-July-2022	01-Sept-2023	N/A	
<i>Combi-Wall (Pre-Drill)</i>	29-Oct-2021	17-Dec-2021	29-Sept 2022	22-Sept-2023	N/A	
<i>Combi-Wall (Installation)</i>	28-Sept-2022	28-April-2023	4-Nov-2022	01-Dec-2023	N/A	
<i>Surcharge Period</i>	28-April-2023	N/A	<i>(January 2025)</i>	N/A	N/A	
<i>Tie Rods</i>	25-April-2023	16-April-2024	<i>(March 2025)</i>	<i>(October 2024)</i>	N/A	
Capping Beam	7-Sept-2023	<i>(April 2025)</i>	<i>(December 2024)</i>	<i>(November 2024)</i>	N/A	
<i>Tie Rod Deadman</i>	22-Dec-2022	N/A	N/A	N/A	N/A	
Land Side Crane Rail Beam	N/A	<i>(March 2025)</i>	8-Aug-2023	2-Nov-2024	N/A	
<i>Water & Electrical Utilities</i>	<i>(December 2024)</i>	<i>(May 2025)</i>	<i>(March 2025)</i>	<i>(July 2025)</i>	N/A	
<i>Drainage Structures</i>	<i>(November 2024)</i>	<i>(March 2025)</i>	<i>(February 2025)</i>	<i>(March 2025)</i>	N/A	
Water Side Crane Rail Beam	N/A	<i>(May 2025)</i>	<i>(February 2025)</i>	<i>(March 2025)</i>	N/A	
<i>Concrete Tie-Beam</i>	N/A	<i>(April 2025)</i>	<i>(March 2025)</i>	<i>(April 2025)</i>	N/A	
Crane Rails Installed	N/A	<i>(March 2025)</i>	<i>(May 2025)</i>	<i>(July 2025)</i>	N/A	
Crane Substation Switchgear & Transformer Delivered to KCT	N/A	29-Sept-2023 [Transformer] 5-Jan-2024 [Switchgear]	N/A	N/A	N/A	
Crane Substation	N/A	<i>(April 2025)</i>	N/A	N/A	N/A	
Dredging [at bulkhead wall]	31-Jan-2024	28-Mar-2024	<i>(April 2025)</i>	<i>(February 2025)</i>	N/A	
Dredging [offshore]	9-Jan-2024	<i>(November 2024)</i>	<i>(April 2025)</i>	<i>(January 2025)</i>	N/A	
Fenders Installed	<i>(May 2025)</i>	<i>(July 2025)</i>	<i>(June 2025)</i>	<i>(August 2025)</i>	N/A	
PCC Pavement	<i>(April 2025)</i>	<i>(June 2025)</i>	<i>(May 2025)</i>	<i>(July 2025)</i>	<i>(September 2024)</i>	
<i>Cathodic Protection</i>	<i>(April 2025)</i>	<i>(July 2025)</i>	<i>(May 2025)</i>	<i>(July 2025)</i>	N/A	
<i>Pavement Striping</i>	<i>(May 2025)</i>	<i>(July 2025)</i>	<i>(June 2025)</i>	<i>(July 2025)</i>	<i>(November 2024)</i>	
TWIC Fencing	N/A	N/A	N/A	<i>(July 2025)</i>	<i>(November 2024)</i>	
PROJECT COMPLETION	<i>(September 8, 2025)</i>					

MONTHLY REPORT NO. 042

Period of September 27 – October 31, 2024
Kapalama Container Terminal Wharf and Dredging
Honolulu Harbor, Oahu, Job HC 10498
State of Hawaii, Department of Transportation, Harbors Division
Contract No. 69245

C. ACTIVITIES

Work observed at Pier 40F:

- KIWC civil crew placed Mirafi fabric and #2course material over the dewatered pond.

Work observed at Pier 41:

- Hauled out the minus (-) 3-inch crushed dredged coral material.
- KIWC and PFI continued crushing dredge material.
- KIWC backfilled and compacted the north landside lift 8 of the drain inlet of TD-3.
- KIWC civil crew installed the 36-inch RCP into TD 3 drain inlet.
- KIWC mason crew continued concrete dry finishing of the inner walls of P8 of TD3.
- PFI resumed crushing the dredged coral material,
- PFI resumed crushing the dredged coral to minus (-) 1.5-inch material.
- Pineridge Farms resumed crushing the dredged material at STA 25+50 to 24+50.

Work Observed at Pier 42:

- AFT reperformed CSL testing for shaft 15-A2s-36.
- HRSPI and KIWC continued reinforcement installation from 5+70 to 7+70 at Trench Drain #2.
- HRSPI continued installation of the WSCRb reinforcement.
- HRSPI continued installing the rebar cage for A1 and A2 of the WSCRb (Sta 16+61 to 18+55).
- KIWC and HRSPI installed formwork and rebar for WSCRb pour #A1 (Sta 17+60 to 18+55).
- KIWC carpentry crew installed the polyvinyl bond braker (STA 14+23 to STA 12+85).
- KIWC chipped around CIDH shaft 14-A4-36.
- KIWC civil crew continued to chip the 36-inch CIDH piers for the 48-inch PVC collar.
- KIWC civil crew excavated SD-4 and installed the Mirafi fabric.
- KIWC continued in-water dredging from approximately Sta. 9+00 to 10+00.
- KIWC installed formwork for TD-2 pour #7 (Sta 7+56 to 6+56).
- KIWC installed formwork for WSCRb pour #A1 (Sta 17+60 to 18+55).
- KIWC poured back shafts 14 and 16 in Area 4.
- KIWC poured the mud mat at the cable drum vault in pour #A5 (Sta 14+54).
- KIWC started formwork installation for TD-2 Sta. 6+50 to 7+57.
- KIWC stripped formwork from around WSCRb pour #A1 (Sta 7+60 to 8+55).
- KIWC utility crew excavated the storm drain trench (STA 1+00 to STA 3+00).
- Paul Electric work at Pullbox #9 and surrounding excavations.
- PECL poured the remaining duct bank area and continued backfill of the duct bank west of PB-9.

Work Observed at Pier 43:

- KIWC mason crew concrete dry finish of the walls of P23 of the CWCB (Sta 1+19 to 2+11).
- AFT on site to test the CSL tubes for the completed CIDH piers.
- AFT performed CSL testing in shafts 01-A2S, 15-A2S, 21-A2-36, 30-A2-36 and 32-A2-36.
- HRSPI crew fabricated the rebar mat for the irregular shaped PCCP pour.
- KIWC and HRSPI installed rebar and adjusted formwork for the WL-1&2 paving blockouts.
- KIWC and HRSPI set formwork and rebar for WSCRb pour #A1 (Sta 17+60 to 18+55).
- KIWC and PFI continued crushing the dredged coral material.
- KIWC civil crew backfilled P7 and P8 (north side) of the LSCRb.
- KIWC civil crew conducted land side dredging (STA 5+00)
- KIWC constructed a vehicle ramp over the LSCRb (approx. Sta 1+50).
- KIWC continued shaft top prep from Sta. 8+50 to 7+00 of the WSCRb.
- KIWC DB Seattle in water dredging between STA 10+00 to STA 8+50.
- KIWC drilled CIDH shafts 19-A2-36, 15-A2-26 and 12-A2-36.
- KIWC dry finished the waterside of CWCB pour #23 (Sta 1+19 to 2+11).
- KIWC finalized formwork and rebar for CWCB pour #25 (Sta 0+00 to 0+18).

MONTHLY REPORT NO. 042

Period of September 27 – October 31, 2024

Kapalama Container Terminal Wharf and Dredging

Honolulu Harbor, Oahu, Job HC 10498

State of Hawaii, Department of Transportation, Harbors Division

Contract No. 69245

- KIWC foundation crew drilled shafts CIDH # 19-A2-36, 15-A2-36 and 11-A2-36.
- KIWC foundation crew poured concrete for the CIDH shafts prep.
- KIWC installed CIDH shafts 29-A2-36 and 35-A2-36.
- KIWC installed formwork for WSCR B pour #A1 (Sta 17+60 to 18+55).
- KIWC mason crew grouted tie rod bells of P22 and P23 of the CWCB.
- KIWC paving crew drilled the edges of the PCCP for dowel installations.
- KIWC paving crew installed the dowel bar for the transverse joint of the PCCP.
- KIWC paving crew installed the steel forms for WL 1 and 2.
- KIWC poured CIDH location 1-A2s-36.
- KIWC poured CIDH shafts 13-A2-36 and 16-A2-36.
- KIWC poured CIDH shafts 26-A2-36 and 23-A2-36.
- KIWC poured CIDH shafts 32-A2-36 and 36-A2-36.
- KIWC poured CWCB poured #24 (Sta 0+18 to 1+19).
- KIWC stripped formwork from around CWCB pour #24 (Sta 0+18 to 1+19).
- KIWC utility crew backfilled, compacted and tested the fill placement of P7 and P8 of the LSCR B.
- WL1&2 Prepped bollard pedestals for installation of ¾" expansion board.

Work Observed at Snug Harbor:

- No work observed.

Work Observed at PCCP:

- KIWC civil crew used the CAT D5 dozer to grade the basecourse aggregate around new Guard Shack.

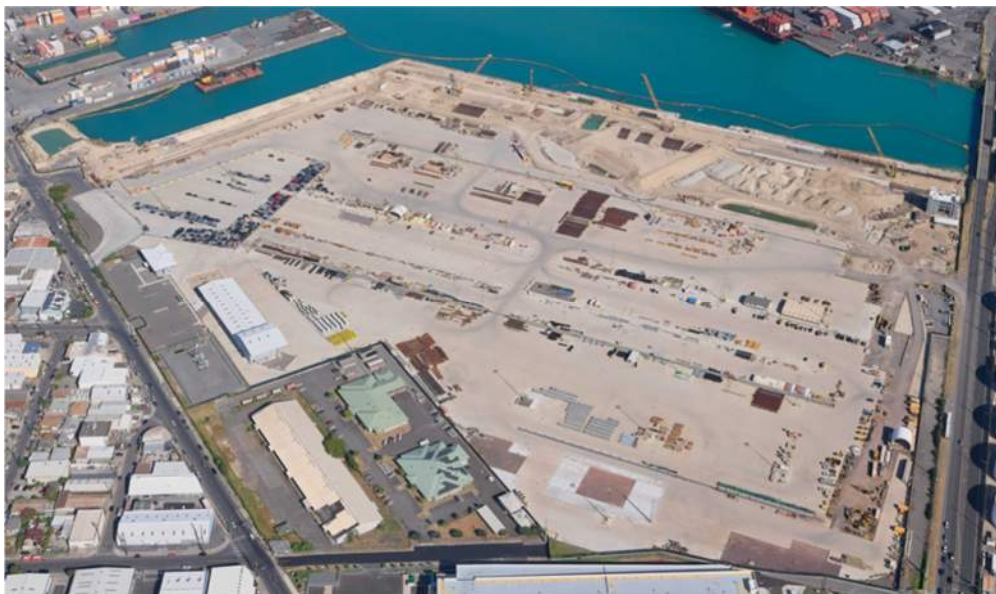
MONTHLY REPORT NO. 042

Period of September 27 – October 31, 2024
Kapalama Container Terminal Wharf and Dredging
Honolulu Harbor, Oahu, Job HC 10498
State of Hawaii, Department of Transportation, Harbors Division
Contract No. 69245

D. AERIAL PHOTOGRAPH



April 2024



July 2024

E. PROJECT PHOTOGRAPHS (See attached Sheets)

H.C. 10498 KAPALAMA CONTAINER TERMINAL YARD WHARF AND DREDGING
MONTHLY REPORT NO. 042
SEPTEMBER 27 TO OCTOBER 31, 2024



Pier 43: Backfilling, compacting and testing for P7 and P8 mauka of the LSCRB



KIWC fabricating panels for dredging operation.



KIWC continued crushing dredge material with pineridge



MPE performing compaction testing for the backfill around PB-9 on Pier 42



KIWC fabricating panels for dredging operation.



KIWC stripping formwork from CWCB pour #24.

H.C. 10498 KAPALAMA CONTAINER TERMINAL YARD WHARF AND DREDGING
MONTHLY REPORT NO. 042
SEPTEMBER 27 TO OCTOBER 31, 2024



Pier 43: WL land 2 - KIWC foundation crew installed the 3/4-inch thick expansion board on the bases of the bollards



KIWC stripping formwork from around WSCRB pour #A1.



MPE testing compaction for the east section of "lane 1" in Pier 40F



Pier 40F: Backfilled the dewatering pond



Pier 40F: The crew placed the minus (-) 3-inch crushed coralline material over the "burrito" wrapped grave



Pier 40F: The crew fused the 2 to 3 feet overlap of the Mirafi fabric before covering the bottom of the pond

H.C. 10498 KAPALAMA CONTAINER TERMINAL YARD WHARF AND DREDGING
MONTHLY REPORT NO. 042
SEPTEMBER 27 TO OCTOBER 31, 2024



KIWC dry finishing the surface of CWCB pour #23.



Pier 40F: KIWC civil crew (Sanu's) used the CAT D5 dozer to spread the fill placement in 12-inch loose lifts



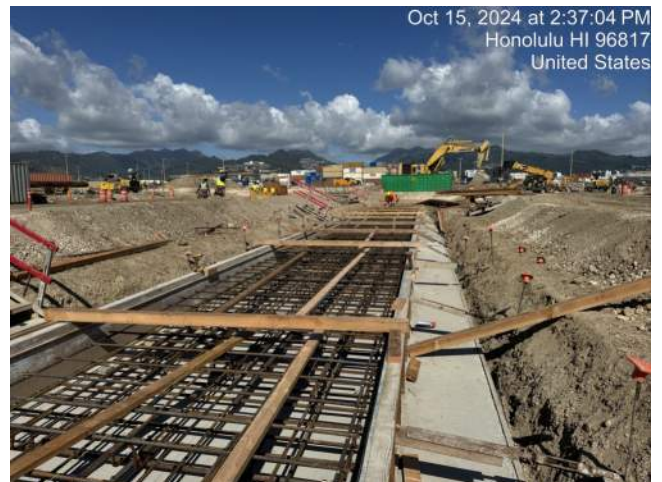
Pier 40F: MPE on site to take density tests of the compacted fill



Pier 43: KIWC DB Seattle resumed in water dredging between STA 9+50 and STA 7+00



Pier 43: PFI resumed crushing the dredged material at the Pier 43 stockpile



KIWC and HRSPI progress installing the formwork and reinforcement for TD-2

H.C. 10498 KAPALAMA CONTAINER TERMINAL YARD WHARF AND DREDGING
MONTHLY REPORT NO. 042
SEPTEMBER 27 TO OCTOBER 31, 2024



KIWC setting formwork for the WSCRb pour #A1 bulkhead.



Pier 43: KIWC DB Seattle continued in water dredging between STA 8+60 and STA 6+00



Pullbox #9 Trench Slope



KIWC placing filter fabric and 3b in the LSCRb crane rail pocket.



KIWC dry finishing the surface of the waterside of CWCB pour #23.



KIWC installing formwork for WSCRb pour #A1.

H.C. 10498 KAPALAMA CONTAINER TERMINAL YARD WHARF AND DREDGING
MONTHLY REPORT NO. 042
SEPTEMBER 27 TO OCTOBER 31, 2024



Excavator working at P43 Embankment



15-A4-36 and 16-A4-36 being chipped by KIWC



KIWC grinded and epoxied headwall penetration at P40F



15-A4-36 and 16-A4-36 being chipped by KIWC



Excavator working at P43 Embankment



KIWC hauling and adjusting wet excavation material

H.C. 10498 KAPALAMA CONTAINER TERMINAL YARD WHARF AND DREDGING
MONTHLY REPORT NO. 042
SEPTEMBER 27 TO OCTOBER 31, 2024



Pier 43: Hauled out processed material to Waimanalo Gulch



KIWC installing formwork for WSCRb pour #A1.



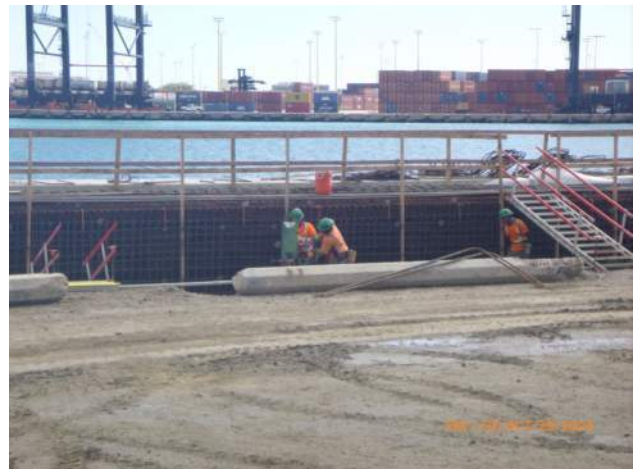
KIWC installing formwork for WSCRb pour #A1.



PE installing conduit pipes at PB9



Pier 42: KIWC civil crew excavated the trench for SD 4 and installed the Mirafi fabric before placing the #3B fine gravel



KIWC and HRSPI installing rebar and formwork for the WSCRb on pier 42.

H.C. 10498 KAPALAMA CONTAINER TERMINAL YARD WHARF AND DREDGING
MONTHLY REPORT NO. 042
SEPTEMBER 27 TO OCTOBER 31, 2024



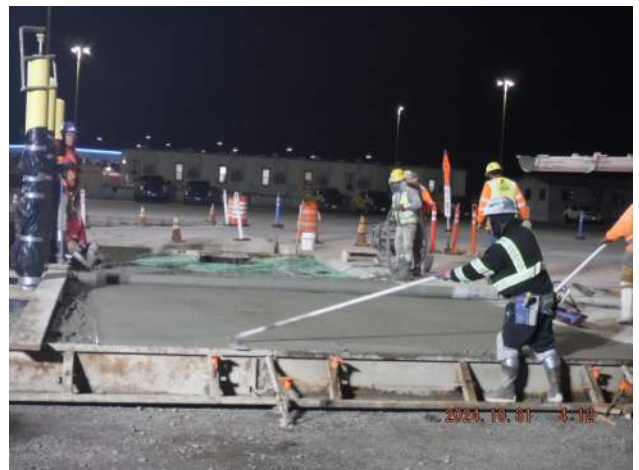
KIWC pouring concrete at TD2



HRSPI installing rebar for WSCRB pour #A1.



Pier 43: HRSPI crew installed the rebar mat for WL-1 and 2 blockouts



Pier 43: PCCP Block out - KIWC paving crew used floats to smooth out the concrete surface



Pier 43: NCS crew on site to green saw cut the PCCP



KIWC setting the crane rail pocket and cable trench hardware in WSCRB pour #A1.