

Monthly Report No. 043

November 1, 2024 – November 28, 2024

KAPALAMA CONTAINER TERMINAL WHARF AND DREDGING Job HC 10498 Honolulu Harbor, Oahu, Hawaii

Prepared for:



State of Hawaii
Department of Transportation
Harbors Division

Prepared by:



Harbors Project No. H.C. 10498

MONTHLY REPORT NO. 043

Period of November 1 – November 28, 2024
Kapalama Container Terminal Wharf and Dredging
Honolulu Harbor, Oahu, Job HC 10498
State of Hawaii, Department of Transportation, Harbors Division
Contract No. 69245

A. PROJECT SUMMARY

Project:	Kapalama Container Terminal Wharf and Dredging
Project Number	HC 10498
Location	Honolulu Harbor, Oahu
Owner	State of Hawaii Department of Transportation; Harbors Division
Design Consultant	Moffatt and Nichol
General Contractor	Kiewit Infrastructure West Co.
Construction Manager	Yogi Kwong Engineers, LLC
Notice to Proceed Date	January 4, 2021
Contract Completion Date	April 4, 2024 (To Be Amended) July 31, 2025 (Pending New Contract Amendment)

B. CURRENT PROJECT SCHEDULE – ALL DATES SUBJECT TO CHANGE WITHOUT NOTICE (See next page)

MAJOR ACTIVITY:	COMPLETION DATES AS OF KIWC OCTOBER SCHEDULE:					DD-MON-YYYY: ACTUAL COMPLETION DATE (Month Year) = Anticipated Completion Date** [NOTE: <u>ALL</u> ANTICIPATED DATES ARE SUBJECT TO CHANGE WITHOUT NOTICE]
	PIER 41	PIER 42	SNUG HARBOR	PIER 43	HC 10502 (Ph 1)	
HDD Submarine Water Line - Completed	N/A	N/A	N/A	21-July-2023	N/A	
<i>Mass Grading</i>	13-May-2021	06-July-2021	N/A	8-Aug-2023	N/A	
Landside Demolition - Completed	13-April-2021	27-April-2021	N/A	16-Feb-2022	N/A	
In-Water Demolition - Completed	29-Oct-2021	N/A	19-Nov-2021	N/A	N/A	
<i>Stone Columns (Pre-drill)</i>	06-Oct-2021	5-Aug-2021	6-July-2022	31-Aug-2023	N/A	
<i>Stone Columns (Installation)</i>	14-Oct-2021	12-Aug-2021	6-July-2022	01-Sept-2023	N/A	
<i>Combi-Wall (Pre-Drill)</i>	29-Oct-2021	17-Dec-2021	29-Sept 2022	22-Sept-2023	N/A	
<i>Combi-Wall (Installation)</i>	28-Sept-2022	28-April-2023	4-Nov-2022	01-Dec-2023	N/A	
<i>Surcharge Period</i>	28-April-2023	N/A	(January 2025)	N/A	N/A	
<i>Tie Rods</i>	25-April-2023	16-April-2024	(March 2025)	(October 2024)	N/A	
Capping Beam	7-Sept-2023	(April 2025)	(December 2024)	(November 2024)	N/A	
<i>Tie Rod Deadman</i>	22-Dec-2022	N/A	N/A	N/A	N/A	
Land Side Crane Rail Beam	N/A	(March 2025)	8-Aug-2023	2-Nov-2024	N/A	
<i>Water & Electrical Utilities</i>	(December 2024)	(May 2025)	(March 2025)	(July 2025)	N/A	
<i>Drainage Structures</i>	(November 2024)	(March 2025)	(February 2025)	(March 2025)	N/A	
Water Side Crane Rail Beam	N/A	(May 2025)	(February 2025)	(March 2025)	N/A	
<i>Concrete Tie-Beam</i>	N/A	(April 2025)	(March 2025)	(April 2025)	N/A	
Crane Rails Installed	N/A	(March 2025)	(May 2025)	(July 2025)	N/A	
Crane Substation Switchgear & Transformer Delivered to KCT	N/A	29-Sept-2023 [Transformer] 5-Jan-2024 [Switchgear]	N/A	N/A	N/A	
Crane Substation	N/A	(April 2025)	N/A	N/A	N/A	
Dredging [at bulkhead wall]	31-Jan-2024	28-Mar-2024	(April 2025)	(February 2025)	N/A	
Dredging [offshore]	9-Jan-2024	(November 2024)	(April 2025)	(January 2025)	N/A	
Fenders Installed	(May 2025)	(July 2025)	(June 2025)	(August 2025)	N/A	
PCC Pavement	(April 2025)	(June 2025)	(May 2025)	(July 2025)	(September 2024)	
<i>Cathodic Protection</i>	(April 2025)	(July 2025)	(May 2025)	(July 2025)	N/A	
<i>Pavement Striping</i>	(May 2025)	(July 2025)	(June 2025)	(July 2025)	(November 2024)	
TWIC Fencing	N/A	N/A	N/A	(July 2025)	(November 2024)	
PROJECT COMPLETION	(September 8, 2025)					

MONTHLY REPORT NO. 043

Period of November 1 – November 28, 2024
Kapalama Container Terminal Wharf and Dredging
Honolulu Harbor, Oahu, Job HC 10498
State of Hawaii, Department of Transportation, Harbors Division
Contract No. 69245

C. ACTIVITIES

Work observed at Pier 40F:

- No work observed.

Work observed at Pier 41:

- KIWC work at P40F Trench Drain #3.
- KIWC installed formwork for WSCR B pour #A2 (Sta 17+60 to 18+55).
- PE work at PB15 and PB14

Work Observed at Pier 42:

- HRSPI set formwork for TD-2 pour #1 (Sta 6+60 to 7+60).
- KIWC adjusted formwork for WSCR B pour #A1 (Sta 17+60 to 18+55).
- KIWC and HRSPI installed formwork and rebar for WSCR B pour #A1 (Sta 17+60 to 18+55).
- KIWC work at Storm Drain #4.
- KIWC work at Trench Drain #2.
- PE work at PB9/LSCR B Connection.
- PECL performed compaction for the PB-9 duct bank run.

Work Observed at Pier 43:

- AFT on site to test CSL Tubes for CIDH 2-A3S, and 9-A2S.
- HRSPI installed rebar for the Crane Drum Vault in WSCR B pour #A5 (Sta 14+54).
- KIWC and HRSPI installed formwork and rebar for WSCR B pours #A1-A2 (Sta 16+61 to 18+55).
- KIWC and HRSPI prepped for the WMH blackout paves 3 and 4.
- KIWC Civil crew widened the ramp over P7 of the LSCR B.
- KIWC DB Seattle continued in water dredging.
- KIWC Foundation crew grouted CSL tubes between STA 7+00 and STA 9+00.
- KIWC foundation crew poured back concrete for CIDH 2-A23-36 and 9-A2-36.
- KIWC foundation crew poured concrete for CIDH #15-A2 and #11-A2.
- KIWC foundation crew poured concrete for CIDH 19-A2-36.
- KIWC paved the blockouts around WL-1&2 manholes.
- KIWC paving crew stripped the forms from the PCCP WL 1&2 paving block outs.
- KIWC poured CIDH shaft 20-A2-36.
- KIWC poured pave #3 of the WMH blackout.
- KIWC poured pave #4 of the WMH block out.
- KIWC set formwork for the paving blackout around the WL 1&2 manholes.
- Kokua Geotech on site to conduct soil sampling over the surcharge fill.
- Kokua Geotech on site to core CIDH #15-A2-36.

Work Observed at Snug Harbor:

- No work observed.

Work Observed at PCCP:

- KIWC continued method compaction of the existing subgrade of the maintenance blackout area.
- KIWC paving crew installed the rubber sealant inside the widened saw cut joints.
- KIWC prepped the paving area around TD-3 on the PCCP.
- KIWC prepped to perform compaction at the "HECO blackout".

D. AERIAL PHOTOGRAPH



April 2024



July 2024

E. PROJECT PHOTOGRAPHS

(See attached Sheets)

H.C. 10498 KAPALAMA CONTAINER TERMINAL YARD WHARF AND DREDGING
MONTHLY REPORT NO. 043
NOVEMBER 1 TO NOVEMBER 28, 2024



Pier 43: HRSPI continued to fabricate the rebar mat for the PCCP Block outs paving



KIWC setting formwork around the WL 12 manhole blockouts.



Pier 43: KIWC foundation crew continued to pull #3 casing and removed the concrete for placing the vibratory hammer



KIWC processing dredged material on pier 43.



KIWC constructing an equipment pad around CIDH shaft 15-A2S-36.



KIWC moving 36" CIDH cages to the staging area on pier 43.

H.C. 10498 KAPALAMA CONTAINER TERMINAL YARD WHARF AND DREDGING
MONTHLY REPORT NO. 043
NOVEMBER 1 TO NOVEMBER 28, 2024



HRSPI installing rebar for WSCRb pour #A2.



KIWC compacting backfill at SD-4



KIWC setting formwork for WSCRb pour #A1.



Pier 43: Dredged material stockpile-Hauled out processed material to Waimanalo Gulch



Pier 43: KIWC crew crushing the dredged material at the dredged material stockpile



PE preparing for buritto wrap at LSCRb

H.C. 10498 KAPALAMA CONTAINER TERMINAL YARD WHARF AND DREDGING
MONTHLY REPORT NO. 043
NOVEMBER 1 TO NOVEMBER 28, 2024



MPE testing compacted backfill over ductbank on pier 42.



KIWC setting the crane cable trench in WSCRB pour #A1.



KIWC spreading rebar for concrete hose insertion into the WSCRB rebar cage.



MN performing a structural observation for WSCRB pour #A1.



HRSPI set rebar for the TD-2 rebar cage.



KIWC setting anchors in the WSCRB pour #A1 crane rail pocket.

H.C. 10498 KAPALAMA CONTAINER TERMINAL YARD WHARF AND DREDGING
 MONTHLY REPORT NO. 043
 NOVEMEBER 1 TO NOVEMBER 28, 2024



KIWC installing formwork for WSCRB pour #A2.



View of TD-2 installation progress on Pier 42



KIWC continued method compaction for the KIWC maintenance area



View of the WMH pavement blackout on Pier 43



Pier 43: KIWC DB Seattle continued in water dredging from STA 7+00 to 6+00



Pier 43: KIWC Foundation crew inserted the tremie pipe for the CIDH shaft 33-A1-36

H.C. 10498 KAPALAMA CONTAINER TERMINAL YARD WHARF AND DREDGING
MONTHLY REPORT NO. 043
NOVEMBER 1 TO NOVEMBER 28, 2024



Pier 43: KIWC DB Seattle continued in water dredging from STA 7+00 to STA 6+00



Pier 43: HRSPI crew on site to add rebar spirals for the 36-inch CIDH rebar cage



KIWC securing outer wall forms at TD2



PE backfilling and compacting PB9/LSCRB Connection



KIWC preparing to install Trench Grate and Frames



HRSPI installing horizontal rebar reinforcements and U-bars.

H.C. 10498 KAPALAMA CONTAINER TERMINAL YARD WHARF AND DREDGING
MONTHLY REPORT NO. 043
NOVEMBER 1 TO NOVEMBER 28, 2024



KIWC prepping for WSCRB pour #A1.



KIWC setting the blackout for the crane rail pocket in WSCRB pour #A2.



KIWC setting the blackout for the crane rail pocket in WSCRB pour #A2.



KIWC setting hardware for the crane cable trench in WSCRB pour #A2.

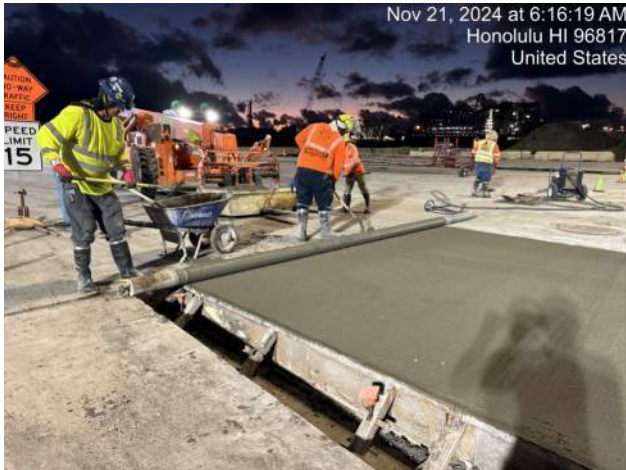


KIWC grinding off the existing waterproofing from TD-3.



KIWC finishing the surface of the paving pour.

H.C. 10498 KAPALAMA CONTAINER TERMINAL YARD WHARF AND DREDGING
MONTHLY REPORT NO. 043
NOVEMEBER 1 TO NOVEMBER 28, 2024



KIWC finished pouring the WMH pave #3



KIWC performed spall repair for the west end of TD-3



PECL progress installing the stabilized layer for PB-15 on Pier 41



Pier 43: KIWC Foundation crew prepped the top of the concrete pour by placing the Sono tube covered with damp burlap material



Pier 43: Concrete was allowed to overflow from top of the casing before pulling the first casing out



Pier 43: KIWC Foundation installing the rebar cage in CIDH 6-A2-36

H.C. 10498 KAPALAMA CONTAINER TERMINAL YARD WHARF AND DREDGING
MONTHLY REPORT NO. 043
NOVEMBER 1 TO NOVEMBER 28, 2024



PE compacting and backfilling at Ductbank @ LSCRB



PE compaction and backfill at PB9



KIWC work at P43 preparing to drill and pour CIDH



KIWC work at P43 removing shaft casings.



KIWC work at P43 drilling CIDH



KIWC work at CIDH 6-A2-36

H.C. 10498 KAPALAMA CONTAINER TERMINAL YARD WHARF AND DREDGING
 MONTHLY REPORT NO. 043
 NOVEMEBER 1 TO NOVEMBER 28, 2024



HRSPI installing rebar for WSCRB pour #A4.



MPE testing delivered concrete for slump and air content.



View of top of concrete in location 20-A2-36 after pulling remaining 5m of casing



View of top of concrete in location 20-A2-36 prior to pulling remaining 5m of casing



PECL compacting lift 14 of the PB-9 to LSCRB area on Pier 42



Pier 43: KIWC civil crew restored the ramp to its original width at the LSCRB over P7

H.C. 10498 KAPALAMA CONTAINER TERMINAL YARD WHARF AND DREDGING
MONTHLY REPORT NO. 043
NOVEMBER 1 TO NOVEMBER 28, 2024



Pier 43: KIWC foundation crew pulled out the casings from CIDH 18-A2-36



PCCP - KIWC paving crew continued to install the rubber sealant in the widened saw cut joints



Pier 43: WL 1 and 2 block outs - KIWC paving crew stripped the forms of the PCCP blockouts



Pier 43: WMH Paving Block Out - KIWC crew used the Bunyan roller to level off the concrete pour



KIWC installing 24" RCP into SD-4.



KIWC attempting to start crusher operations

H.C. 10498 KAPALAMA CONTAINER TERMINAL YARD WHARF AND DREDGING
MONTHLY REPORT NO. 043
NOVEMBER 1 TO NOVEMBER 28, 2024



KIWC installing 24" RCP at SD-4.



KIWC preparing to pull out shoring from SD-4.



PE backfilling and compacting at LSCRB Connection