

# Monthly Report No. 045

December 27, 2024 – January 30, 2025

## KAPALAMA CONTAINER TERMINAL WHARF AND DREDGING

Job HC 10498

Honolulu Harbor, Oahu, Hawaii

Prepared for:



State of Hawaii  
Department of Transportation  
Harbors Division

Prepared by:



Harbors Project No. H.C. 10498

---

## MONTHLY REPORT NO. 045

Period of December 27, 2024 – January 30, 2025  
Kapalama Container Terminal Wharf and Dredging  
Honolulu Harbor, Oahu, Job HC 10498  
State of Hawaii, Department of Transportation, Harbors Division  
Contract No. 69245

---

### A. PROJECT SUMMARY

Project:	Kapalama Container Terminal Wharf and Dredging
Project Number	HC 10498
Location	Honolulu Harbor, Oahu
Owner	State of Hawaii Department of Transportation; Harbors Division
Design Consultant	Moffatt and Nichol
General Contractor	Kiewit Infrastructure West Co.
Construction Manager	Yogi Kwong Engineers, LLC
Notice to Proceed Date	January 4, 2021
Contract Completion Date	<del>April 4, 2024</del> (To Be Amended) July 31, 2025 (Pending New Contract Amendment)

### B. CURRENT PROJECT SCHEDULE – ALL DATES SUBJECT TO CHANGE WITHOUT NOTICE (See next page)

MAJOR ACTIVITY:	COMPLETION DATES AS OF KIWC OCTOBER SCHEDULE:					DD-MON-YYYY: ACTUAL COMPLETION DATE (Month Year) = Anticipated Completion Date** [NOTE: <u>ALL</u> ANTICIPATED DATES ARE SUBJECT TO CHANGE WITHOUT NOTICE]
	PIER 41	PIER 42	SNUG HARBOR	PIER 43	HC 10502 (Ph 1)	
HDD Submarine Water Line - Completed	N/A	N/A	N/A	21-July-2023	N/A	
<i>Mass Grading</i>	13-May-2021	06-July-2021	N/A	8-Aug-2023	N/A	
Landside Demolition - Completed	13-April-2021	27-April-2021	N/A	16-Feb-2022	N/A	
In-Water Demolition - Completed	29-Oct-2021	N/A	19-Nov-2021	N/A	N/A	
<i>Stone Columns (Pre-drill)</i>	06-Oct-2021	5-Aug-2021	6-July-2022	31-Aug-2023	N/A	
<i>Stone Columns (Installation)</i>	14-Oct-2021	12-Aug-2021	6-July-2022	01-Sept-2023	N/A	
<i>Combi-Wall (Pre-Drill)</i>	29-Oct-2021	17-Dec-2021	29-Sept 2022	22-Sept-2023	N/A	
<i>Combi-Wall (Installation)</i>	28-Sept-2022	28-April-2023	4-Nov-2022	01-Dec-2023	N/A	
<i>Surcharge Period</i>	28-April-2023	N/A	(January 2025)	N/A	N/A	
<i>Tie Rods</i>	25-April-2023	16-April-2024	(March 2025)	(October 2024)	N/A	
<b>Capping Beam</b>	7-Sept-2023	<b>(April 2025)</b>	<b>(December 2024)</b>	<b>(November 2024)</b>	N/A	
<i>Tie Rod Deadman</i>	22-Dec-2022	N/A	N/A	N/A	N/A	
<b>Land Side Crane Rail Beam</b>	N/A	<b>(March 2025)</b>	8-Aug-2023	2-Nov-2024	N/A	
<i>Water &amp; Electrical Utilities</i>	(December 2024)	(May 2025)	(March 2025)	(July 2025)	N/A	
<i>Drainage Structures</i>	(November 2024)	(March 2025)	(February 2025)	(March 2025)	N/A	
<b>Water Side Crane Rail Beam</b>	N/A	<b>(May 2025)</b>	<b>(February 2025)</b>	<b>(March 2025)</b>	N/A	
<i>Concrete Tie-Beam</i>	N/A	(April 2025)	<b>(March 2025)</b>	(April 2025)	N/A	
<b>Crane Rails Installed</b>	N/A	<b>(March 2025)</b>	<b>(May 2025)</b>	<b>(July 2025)</b>	N/A	
<b>Crane Substation Switchgear &amp; Transformer Delivered to KCT</b>	N/A	29-Sept-2023 [Transformer] 5-Jan-2024 [Switchgear]	N/A	N/A	N/A	
<b>Crane Substation</b>	N/A	<b>(April 2025)</b>	N/A	N/A	N/A	
<b>Dredging [at bulkhead wall]</b>	31-Jan-2024	28-Mar-2024	<b>(April 2025)</b>	<b>(February 2025)</b>	N/A	
<b>Dredging [offshore]</b>	9-Jan-2024	<b>(November 2024)</b>	<b>(April 2025)</b>	<b>(January 2025)</b>	N/A	
<b>Fenders Installed</b>	<b>(May 2025)</b>	<b>(July 2025)</b>	<b>(June 2025)</b>	<b>(August 2025)</b>	N/A	
<b>PCC Pavement</b>	<b>(April 2025)</b>	<b>(June 2025)</b>	<b>(May 2025)</b>	<b>(July 2025)</b>	<b>(September 2024)</b>	
<i>Cathodic Protection</i>	(April 2025)	(July 2025)	(May 2025)	(July 2025)	N/A	
<i>Pavement Striping</i>	(May 2025)	(July 2025)	(June 2025)	(July 2025)	(November 2024)	
<b>TWIC Fencing</b>	N/A	N/A	N/A	<b>(July 2025)</b>	<b>(November 2024)</b>	
<b>PROJECT COMPLETION</b>	<b>(September 8, 2025)</b>					

---

## MONTHLY REPORT NO. 045

Period of December 27, 2024 – January 30, 2025  
Kapalama Container Terminal Wharf and Dredging  
Honolulu Harbor, Oahu, Job HC 10498  
State of Hawaii, Department of Transportation, Harbors Division  
Contract No. 69245

---

### C. ACTIVITIES

#### Work observed at Pier 40F:

- No work observed.

#### Work observed at Pier 41:

- KIWC civil crew continued crushing the dredged material.
- PE continued backfill and compaction of ductbanks north and south of PBC-15.

#### Work Observed at Pier 42:

- HRSPI installing rebar walls at TD-2 P4.
- KIWC adjusted formwork for WSCR B pour #A3 (Sta 15+75 to Sta 16+61).
- KIWC and HRSPI installed rebar and formwork for the WSCR B (Sta 13+83 to 17+60).
- KIWC and HRSPI installed rebar and formwork for WSCR B pours #A2 and A3 (Sta 15+75 to 17+60).
- KIWC installed formwork for the WSCR B (Sta 14+54 to 17+60).
- KIWC installed spacers and adjusted trench grates at TD-2 P7/P6.
- KIWC installed templates at TD-2 P5. HRSPI secured rebar mat and began installing rebar walls at TD-2 P5.
- KIWC poured WSCR B pour #A2 (Sta 17+60 to 16+61).
- PE laid conduit pipes at west of PBC Cluster, and poured concrete for ductbanks between PBC-14 and 15.

#### Work Observed at Pier 43:

- AFT performed CSL testing for CIDH shafts 21-A1-36 and 18-A2-36.
- Bridge and Marine crew continued water dredging.
- Carpentry crew forming mud mat and installing the ¼-inch thick expansion board.
- Grout core hole in 15-A2S-36 of the CIDH pier.
- HRSPI re-set tie beam rebar embedded in WSCR B pour #A2 (Sta 16+61 to 17+60).
- KIWC cleaned CIDH shaft 15-A2S-36.
- KIWC continued chipping CIDH shafts for the WSCR B from Sta. 0+95 to 4+50.
- KIWC continued chipping CIDH shafts from Sta. 1+00 to 1+50.
- KIWC continued chipping CIDH shafts from Sta. 3+80 to 2+90.
- KIWC continued dredging at approximately Sta. 6+00 to 7+00.
- KIWC continued in-water dredging from Sta. 2+00 to 3+75.
- KIWC continued in-water dredging from Sta. 5+00 to 7+00.
- KIWC continued shaft top prep for the WSCR B CIDH shafts.
- KIWC resumed in-water dredging from Sta. 1+50 to 2+50.

#### Work Observed at Snug Harbor:

- No work observed.

#### Work Observed at PCCP:

- No work observed.

---

# MONTHLY REPORT NO. 045

Period of December 27, 2024 – January 30, 2025  
Kapalama Container Terminal Wharf and Dredging  
Honolulu Harbor, Oahu, Job HC 10498  
State of Hawaii, Department of Transportation, Harbors Division  
Contract No. 69245

---

## D. AERIAL PHOTOGRAPH



July 2024



January 2025

## E. PROJECT PHOTOGRAPHS (See attached Sheets)

H.C. 10498 KAPALAMA CONTAINER TERMINAL YARD WHARF AND DREDGING  
MONTHLY REPORT NO. 044  
DECEMBER 27, 2024 TO JANUARY 30, 2025



KIWC crushing dredging spoils at P41.



KIWC crushing dredging spoils at P41.



KIWC crushing dredging spoils at P41.



KIWC performing prep for the WSCRb mud mat on Pier 43



PCCP: KIWC civil crew placed 12-inch thick of the crushed coralline material as a bedding for the future dredged material



HRSPI resetting embedded tie beam rebar in WSCRb pour #A2.

H.C. 10498 KAPALAMA CONTAINER TERMINAL YARD WHARF AND DREDGING  
MONTHLY REPORT NO. 044  
DECEMBER 27, 2024 TO JANUARY 30, 2025



KIWC setting formwork around the embedded tie beam rebar in WSCRB pours #A1 and A2.



Pier 41: KIWC civil crew continued to crush the dredge material between STA 23+00 and STA 24+00



Pier 41: PE laying conduit pipes at PBC/PBE-15.



KIWC installing formwork around the embedded tie beam rebar in WSCRB pour #A3.



KIWC removing excess concrete and debris from the CIDH installation on Pier 43



Pier 42: Existing condition of the CIDH piers in the junction structure

H.C. 10498 KAPALAMA CONTAINER TERMINAL YARD WHARF AND DREDGING  
 MONTHLY REPORT NO. 044  
 DECEMBER 27, 2024 TO JANUARY 30, 2025



Pier 41: KIWC civil crew continued to stockpile the crushed material from STA 26+50 to STA 27+50



Pier 41: KIWC DB Seattle installing the rubber tire fender skirts around the derrick barge



KIWC installing plastic bond breakers for the mud mat pour on Pier 43



KIWC adjusting the 1/4" filler board on the wall of the CWCB next to the cable drum vault.



KIWC adjusting formwork around the bulkhead between WSCRB pours #A2 and A3.



View of CIDH shaft with excess concrete removed.



H.C. 10498 KAPALAMA CONTAINER TERMINAL YARD WHARF AND DREDGING  
MONTHLY REPORT NO. 044  
DECEMBER 27, 2024 TO JANUARY 30, 2025



KIWC setting formwork for the cable drum and power vaults in WSCRB pour #A5.



KWIC foundations crew testing equipment on Pier 43



KIWC setting formwork for WSCRB pour #A2.



KIWC applying curing compound to the top of the freshly paved area



PE installing conduits west of PBC-15.



KIWC installing formwork for the power and cable drum vault in WSCRB pour #A5.

H.C. 10498 KAPALAMA CONTAINER TERMINAL YARD WHARF AND DREDGING  
MONTHLY REPORT NO. 044  
DECEMBER 27, 2024 TO JANUARY 30, 2025



PCCP: KIWC and YKE crew grade checked MT 6 with grade issues. Recommended to fix the entire area before paving.



PCCP: MT 5 was sprayed with J9 concrete curing compound



PE installed conduit pipes north of PBC-15



Pier 42: PF crew continued to drill around the cutter and the Kelly bar stuck in the ground in the junction structure



PE chipping off concrete jacket to get clearance between waterline



MPE testing backfill compaction test at TD-1

H.C. 10498 KAPALAMA CONTAINER TERMINAL YARD WHARF AND DREDGING  
MONTHLY REPORT NO. 044  
DECEMBER 27, 2024 TO JANUARY 30, 2025



KIWC spraying curing compound over MT-3



PCCP: MT3 - NCS crew on site to green saw cut the newly paved MT3



Pier 42: PF crew excavated by drilling around the cutter and the Kelly bar for extraction in the junction structure



KIWC adjusting the crane cable drum in WSCRb pour #A3.



PCCP: Paving crew applied grease of the dowels



KIWC installing formwork for WSCRb pour #A3.

H.C. 10498 KAPALAMA CONTAINER TERMINAL YARD WHARF AND DREDGING  
MONTHLY REPORT NO. 044  
DECEMBER 27, 2024 TO JANUARY 30, 2025



PE conducting backfill and compaction at PBC-15 north.



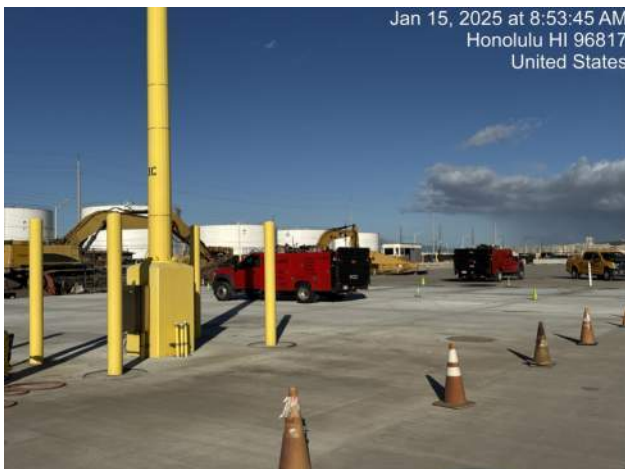
KIWC cleaning formwork for WSCRB pour #A2.



KIWC prepping formwork for WSCRB pour #A2.



KIWC pouring concrete for WSCRB pour #A2.



NCS saw cutting the WMH PCCP blockout recently paved



KIWC moving surcharge material to the crusher and the material storage bin north of the surcharge

H.C. 10498 KAPALAMA CONTAINER TERMINAL YARD WHARF AND DREDGING  
MONTHLY REPORT NO. 044  
DECEMBER 27, 2024 TO JANUARY 30, 2025



KIWC epoxying and doweling at Pasha Maintenance Blockout



MPE performing compaction testing for PE backfill on Pier 41



PCCP: MT-10 - KIWC civil crew continued grading the basecourse between 8 and 8.5 inches depth

H.C. 10498 KAPALAMA CONTAINER TERMINAL YARD WHARF AND DREDGING  
MONTHLY REPORT NO. 044  
DECEMBER 27, 2024 TO JANUARY 30, 2025



PCCP: KIWC civil crew used the CAT 305 mini excavator to scarify the grade at MT12 (North)



KIWC installing formwork for WSCRB pour #A3.



PCCP: KIWC paving crew sprayed the J9 concrete curing compound on the face of MT6



KIWC installing formwork around the CPV in WSCRB pour #A5.



KIWC scoring the edges of CIDH shafts before performing the chipping process for the shafts of the WSCRB



PE compacting at PBC-15.

H.C. 10498 KAPALAMA CONTAINER TERMINAL YARD WHARF AND DREDGING  
MONTHLY REPORT NO. 044  
DECEMBER 27, 2024 TO JANUARY 30, 2025



KIWC and HRSPI working at TD-2.



HRSPI fixing splice issue at TD-2 P5.



KIWC performing grade check at MT-9.



KIWC removing formwork from around WSCR pour #A3.



PE pulls off Pullbox Lids at PBC-15.



Pier 42: KIWC structure crew adjusted the braces and rebar cage of A3 of the WSCR

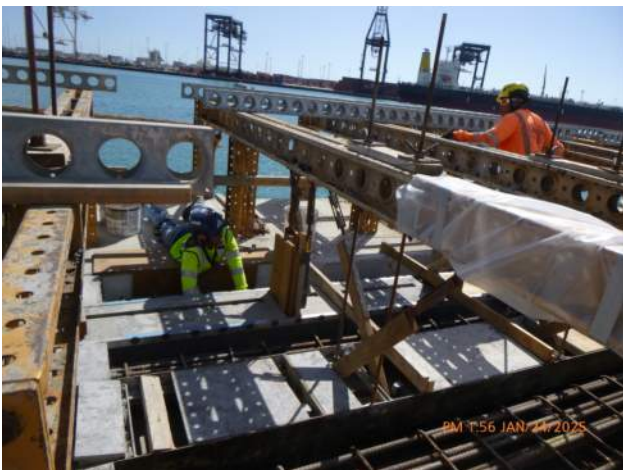
H.C. 10498 KAPALAMA CONTAINER TERMINAL YARD WHARF AND DREDGING  
MONTHLY REPORT NO. 044  
DECEMBER 27, 2024 TO JANUARY 30, 2025



YKE straightedge testing the MT-3 PCCP paving blockout.



Jan 24, 2025 at 11:09:02 AM  
1 Sand Island Access Rd  
Honolulu HI 96817  
United States  
KIWC performing shaft top prep for CIDH shaft 30-A1-36



PM T56 JAN 27 2025  
KIWC adjusting formwork for WSCRb pour# A3.



PCCP: PASHA maintenance - KIWC civil crew continued to grade and place basecourse aggregate for the block out



Articles of clothing in TD-2 P5.



Jan 27, 2025 at 11:48:21 AM  
1 Sand Island Access Rd  
Honolulu HI 96817  
United States  
View of the grinded mud mat of the WSCRb on Pier 43



H.C. 10498 KAPALAMA CONTAINER TERMINAL YARD WHARF AND DREDGING  
MONTHLY REPORT NO. 044  
DECEMBER 27, 2024 TO JANUARY 30, 2025



PCCP: PASHA maintenance blackout - Obtained 8.4 % moisture content



KIWC performing grade check on the MT-9 paving breakout.



Pier 43: KIWC DB Seattle continued water dredging between STA 5+00 and STA 7+00