

Monthly Report No. 037

May 3, 2024 – May 30, 2024

KAPALAMA CONTAINER TERMINAL WHARF AND DREDGING

Job HC 10498

Honolulu Harbor, Oahu, Hawaii

Prepared for:



State of Hawaii
Department of Transportation
Harbors Division

Prepared by:



Harbors Project No. H.C. 10498

MONTHLY REPORT NO. 037

Period of May 3 – May 30, 2024

Kapalama Container Terminal Wharf and Dredging

Honolulu Harbor, Oahu, Job HC 10498

State of Hawaii, Department of Transportation, Harbors Division

Contract No. 69245

A. PROJECT SUMMARY

Project:	Kapalama Container Terminal Wharf and Dredging
Project Number	HC 10498
Location	Honolulu Harbor, Oahu
Owner	State of Hawaii Department of Transportation; Harbors Division
Design Consultant	Moffatt and Nichol
General Contractor	Kiewit Infrastructure West Co.
Construction Manager	Yogi Kwong Engineers, LLC
Notice to Proceed Date	January 4, 2021
Contract Completion Date	April 4, 2024 (To Be Amended) July 31, 2025 (Pending New Contract Amendment)

B. CURRENT PROJECT SCHEDULE – ALL DATES SUBJECT TO CHANGE WITHOUT NOTICE

(See next page)

MAJOR ACTIVITY:	COMPLETION DATES AS OF KIWC MARCH 2024 SCHEDULE:					DD-MON-YYYY: ACTUAL COMPLETION DATE (Month Year) = Anticipated Completion Date** [NOTE: <u>ALL</u> ANTICIPATED DATES ARE SUBJECT TO CHANGE WITHOUT NOTICE]
	PIER 41	PIER 42	SNUG HARBOR	PIER 43	HC 10502 (Ph 1)	
HDD Submarine Water Line - Completed	N/A	N/A	N/A	21-July-2023	N/A	
<i>Mass Grading</i>	13-May-2021	06-July-2021	N/A	8-Aug-2023	N/A	
Landside Demolition - Completed	13-April-2021	27-April-2021	N/A	16-Feb-2022	N/A	
In-Water Demolition - Completed	29-Oct-2021	N/A	19-Nov-2021	N/A	N/A	
<i>Stone Columns (Pre-drill)</i>	06-Oct-2021	5-Aug-2021	6-July-2022	31-Aug-2023	N/A	
<i>Stone Columns (Installation)</i>	14-Oct-2021	12-Aug-2021	6-July-2022	01-Sept-2023	N/A	
<i>Combi-Wall (Pre-Drill)</i>	29-Oct-2021	17-Dec-2021	29-Sept 2022	22-Sept-2023	N/A	
<i>Combi-Wall (Installation)</i>	28-Sept-2022	28-April-2023	4-Nov-2022	01-Dec-2023	N/A	
<i>Surcharge Period</i>	28-April-2023	N/A	<i>(January 2025)</i>	N/A	N/A	
<i>Tie Rods</i>	25-April-2023	16-April-2024	<i>(November 2024)</i>	<i>(August 2024)</i>	N/A	
Capping Beam	<i>(May 2024)</i>	<i>(December 2024)</i>	<i>(July 2024)</i>	<i>(August 2024)</i>	N/A	
<i>Tie Rod Deadman</i>	22-Dec-2022	N/A	N/A	N/A	N/A	
Land Side Crane Rail Beam	N/A	<i>(January 2025)</i>	8-Aug-2023	<i>(May 2024)</i>	N/A	
<i>Water & Electrical Utilities</i>	<i>(June 2024)</i>	<i>(November 2024)</i>	<i>(March 2025)</i>	<i>(September 2024)</i>	N/A	
<i>Drainage Structures</i>	<i>(August 2024)</i>	<i>(March 2025)</i>	<i>(February 2025)</i>	<i>(July 2024)</i>	N/A	
Water Side Crane Rail Beam	N/A	<i>(January 2025)</i>	<i>(September 2024)</i>	<i>(December 2024)</i>	N/A	
<i>Concrete Tie-Beam</i>	N/A	<i>(January 2025)</i>	<i>(November 2024)</i>	<i>(February 2025)</i>	N/A	
Crane Rails Installed	N/A	<i>(March 2025)</i>	<i>(April 2025)</i>	<i>(June 2025)</i>	N/A	
Crane Substation Switchgear & Transformer Delivered to KCT	N/A	29-Sept-2023 [Transformer] 5-Jan-2024 [Switchgear]	N/A	N/A	N/A	
Crane Substation	N/A	<i>(May 2025)</i>	N/A	N/A	N/A	
Dredging [at bulkhead wall]	31-Jan-2024	28-Mar-2024	<i>(December 2024)</i>	<i>(December 2024)</i>	N/A	
Dredging [offshore]	9-Jan-2024	<i>(May 2024)</i>	<i>(January 2025)</i>	<i>(September 2024)</i>	N/A	
Fenders Installed	<i>(December 2024)</i>	<i>(June 2025)</i>	<i>(May 2025)</i>	<i>(July 2025)</i>	N/A	
PCC Pavement	<i>(November 2024)</i>	<i>(March 2025)</i>	<i>(April 2025)</i>	<i>(May 2025)</i>	<i>(June 2024)</i>	
<i>Cathodic Protection</i>	<i>(October 2024)</i>	<i>(May 2025)</i>	<i>(May 2025)</i>	<i>(June 2025)</i>	N/A	
<i>Pavement Striping</i>	<i>(December 2024)</i>	<i>(June 2025)</i>	<i>(May 2025)</i>	<i>(July 2025)</i>	<i>(August 2024)</i>	
TWIC Fencing	N/A	N/A	N/A	<i>(July 2025)</i>	<i>(August 2024)</i>	
PROJECT COMPLETION	<i>(JULY 31, 2025)</i>					

C. ACTIVITIES**Work observed at Pier 41:**

- HRSPI continued to install the rebar mat footing foundation/invert for the drain inlet of TD-3
- KIWC Bridge and Marine crew install fenders on the CWCB.
- KIWC civil crew backfill the east side wall of the trench drain.
- KIWC continued drilling for 36" CIDH shafts 32, 36, 40, and 44 in area 4.
- KIWC continued in-water dredging from Sta. 20+00 to 21+00
- KIWC mason crew continued to patch the honeycombs on the walls of the trench drain.

Work Observed at Pier 42:

- HRSPI performed rebar corrections for the staged 36" CIDH shaft reinforcement cages.
- KIWC continued landside dredging on the outside of the combi wall (Sta. 13+77 to 12+98).
- KIWC poured 36" CIDH shafts 40, 36, and 32 in Area 4.
- KIWC prepped the grade for CIDH installation near P9 of the cap beam.
- KIWC prepped two CIDH cages for installation into shafts 28-A4-36 and 24-A4-36.
- KIWC started in-water dredging with spoils placed in the dump scow (Sta. 17+00 to 16+00).

Work Observed at Pier 43:

- Carpentry crew installed the plates and nuts of the bollards for P19 of the CWCB.
- KIWC and HRSPI installed formwork and rebar for capping beam (Sta 3+50 to 6+10).
- KIWC backfilled between the LSCRB and the Combi wall (Sta 3+20 to Sta 6+30).
- KIWC backfilled on the waterside of the LSCRB (Sta 2+00 to 2+50).
- KIWC carpentry crew installed steel forms for pour #P19 &20 of the CWCB (Sta 3+39 to 5+62).
- KIWC continued installation of P18 through P20 of the cap beam.
- KIWC installed formwork for capping beam pour #19 (Sta 4+68 to 5+62).
- KIWC mason crew concrete dry finished P16 wall.
- KIWC poured capping beam pour #18 (Sta 5+52 to 6+10).
- KIWC started installation of formwork for the W-2 siphon.
- Paul's Electric installing PVC conduits for the Ship to Shore Power Vault.

Work Observed at Snug Harbor:

- Placed dredged material at Snug Harbor and tested unit weight.
- MPE tested surcharge lift 17.

Work Observed at PCCP:

- Bridge and Marine crew continued cutting the double king piles.
- HRSPI correcting rebar laps for the 36-inch rebar cage CIDH.

MONTHLY REPORT NO. 037

Period of May 3 – May 30, 2024

Kapalama Container Terminal Wharf and Dredging
Honolulu Harbor, Oahu, Job HC 10498

State of Hawaii, Department of Transportation, Harbors Division
Contract No. 69245

D. AERIAL PHOTOGRAPH



November 2023



April 2024

MONTHLY REPORT NO. 037

Period of May 3 – May 30, 2024

Kapalama Container Terminal Wharf and Dredging

Honolulu Harbor, Oahu, Job HC 10498

State of Hawaii, Department of Transportation, Harbors Division

Contract No. 69245

- E. **PROJECT PHOTOGRAPHS**
(See attached Sheets)

H.C. 10498 KAPALAMA CONTAINER TERMINAL YARD WHARF AND DREDGING
MONTHLY REPORT NO. 037
MAY 3 TO MAY 30, 2024



KIWC backfilling on the waterside of the LSCRB on pier 43.



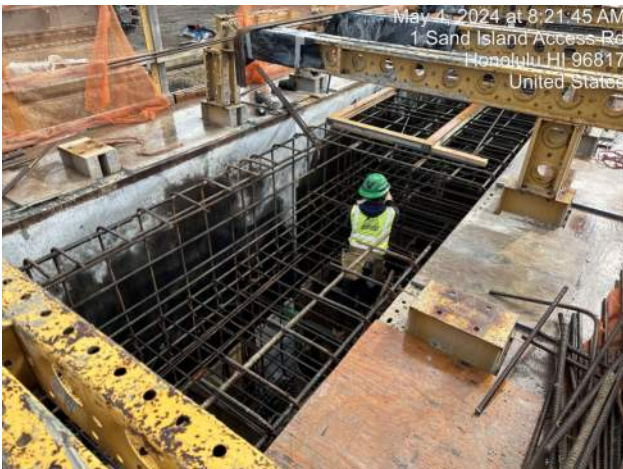
Pier 41: Textured finished of the top of the concrete pour of the trench drain



KIWC grading the area between the LSCRB and the combi wall on pier 43.



KIWC continued in-water dredging on Pier 41



HRSPI installing reinforcement for the P19 shore power vault on Pier 42



KIWC finished dredging for the shift

H.C. 10498 KAPALAMA CONTAINER TERMINAL YARD WHARF AND DREDGING
MONTHLY REPORT NO. 037
MAY 3 TO MAY 30, 2024



KIWC and HRSPI setting rebar cage for capping beam pour #20 on pier 43.



View of PCCP blockout near the maintenance building.



KIWC performing on-land dredging along pier 42.



Pier 41: The dredged material is hauled out to Pier 43 stock pile



Snug Harbor: The CAT CS 56 vibratory roller was used to compact the dredged material over the surcharge (18th fill)



KIWC hauling dredge spoils from Pier 41 to Pier 43

H.C. 10498 KAPALAMA CONTAINER TERMINAL YARD WHARF AND DREDGING
MONTHLY REPORT NO. 037
MAY 3 TO MAY 30, 2024



KIWC pouring the PCCP blockout near the maintenance building.



PCCP: National concrete coring on site to green saw cut the newlpy paved area in PASHA maintenance building



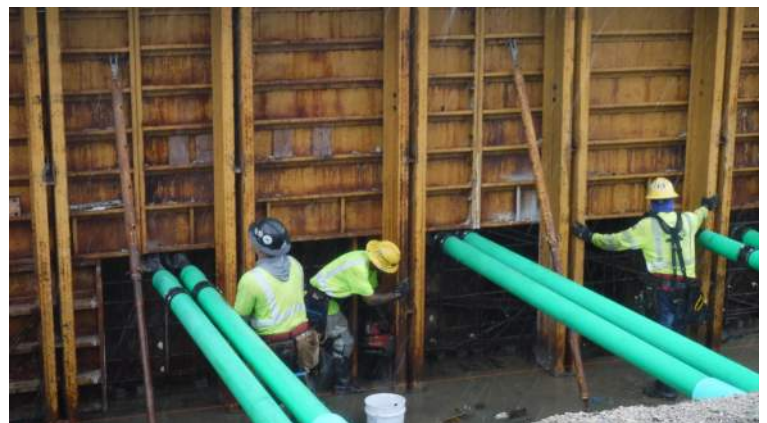
KIWC constructing the vehicle ramp over the LSCRB on Pier 43



Pier 41: KIWC civil crew continued to haul out the dredged material to Pier 43 stockpile



KIWC installing 3b over the tie rods on the landside of the capping beam.



Pier 43: KIWC carpentry crew (Philip's) continued to install the forms for P19 of the CWCB

H.C. 10498 KAPALAMA CONTAINER TERMINAL YARD WHARF AND DREDGING
MONTHLY REPORT NO. 037
MAY 3 TO MAY 30, 2024



Pier 41: KIWC mason crew continued to patch the honeycombs on the ocean side wall of the trench drain from STA 3+00 to STA 5+00



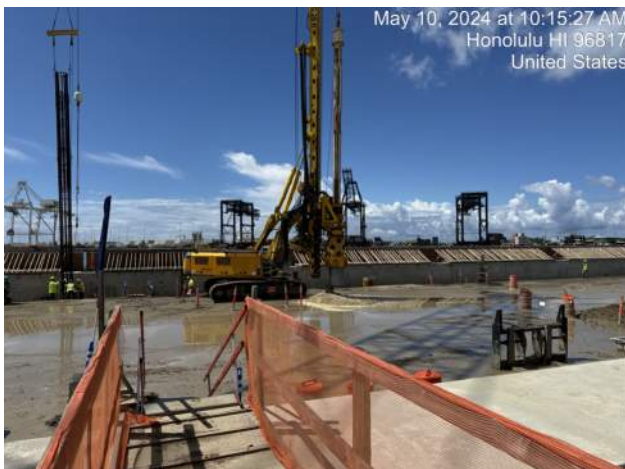
Pier 41: STA 9+00 TD - 3; HRSPI crew continued to install the rebar mat for the floor foundation/invert of the drain inlet



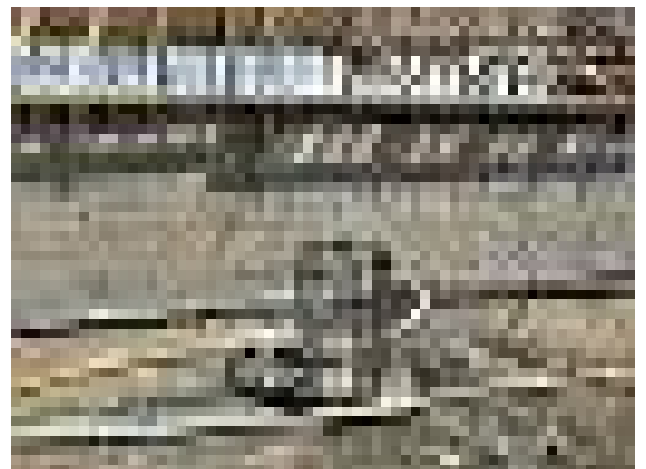
Pier 41: KIWC Bridge and Marine crew used four (4) aligning pins to install the fenders



KIWC installing fenders on pier 41.



KIWC installing CIDH shafts into the drilled holes



View of CIDH shaft 44-A4-36 on Pier 42

H.C. 10498 KAPALAMA CONTAINER TERMINAL YARD WHARF AND DREDGING
MONTHLY REPORT NO. 037
MAY 3 TO MAY 30, 2024



Pier 41: KIWC civil crew continued to backfill the ocean and land sides wall of the trench drain from STA 1+00 to STA 4+00



KIWC setting formwork for the CLSM pour on the ends of the W-2 excavation.



AFT performing CSL testing for 5 CIDH shafts this shift



Pier 41: KIWC civil crew continued to scarify and backfill the ocean side of TD-3 wall from STA 1+00 to STA 4+50



Pier 41: KIWC civil crew continued to scarify and backfill the land side of TD-3 wall from STA 1+00 to STA 4+50



KIWC continued waterside dredging at Snug Harbor

H.C. 10498 KAPALAMA CONTAINER TERMINAL YARD WHARF AND DREDGING
MONTHLY REPORT NO. 037
MAY 3 TO MAY 30, 2024



MPE testing delivered concrete for air content.



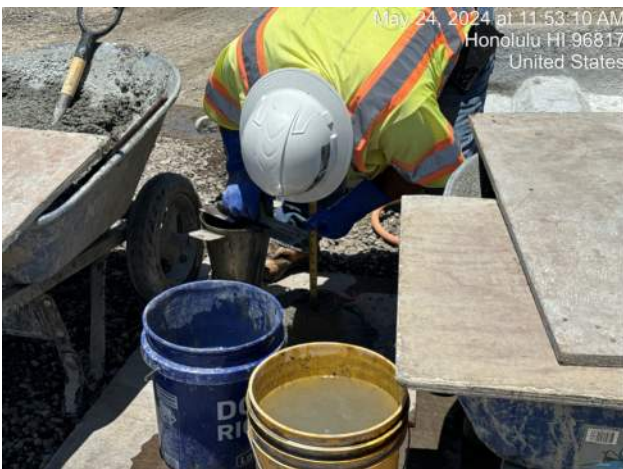
KIWC finishing the surface of capping beam pour #19.



Snug Harbor: KIWC civil crew continued to use the CAT 336 excavator to spread the dredged material over the surcharge



KIWC welding to patch holes burned for the deleted EJ on Pier 43



MPE performing a slump loss test for the CIDH mix



Pier 41: KIWC civil crew used the Mikasa MVH 408 vibratory steel plate to compact the fill on the east side of the trench drain

H.C. 10498 KAPALAMA CONTAINER TERMINAL YARD WHARF AND DREDGING
MONTHLY REPORT NO. 037
MAY 3 TO MAY 30, 2024



Snug Harbor: ESI personnel on site to collect soil samples for the 19th lift of the surcharge



Pier 41: KIWC mason crew continued to patch the honeycombs in the inner walls of the trench drain



KIWC installing formwork for capping beam pour #20.



PCCP: HRSPI correcting the rebar laps for the 36-inch rebar cages



KIWC progress excavating for the cap beam on Pier 43



View of the poly wrap and bottom cover of the DIP for the W-2 siphon

H.C. 10498 KAPALAMA CONTAINER TERMINAL YARD WHARF AND DREDGING
MONTHLY REPORT NO. 037
MAY 3 TO MAY 30, 2024



PCCP: HRSPI crew continued to correct the rebar laps for the 36-inch rbar cage



HRSPI setting rebar for the marine bollards in capping beam pour #20.



Snug Harbor: KIWC civil crew used the CAT D6 dozer to spread the fill material in 12-inch loose lifts



KIWC backfilling and compacting over tie rods on pier 43.



MPE performing compaction testing for tie rod backfill.



View of the polywrap for the DIP installation for W-2