

# Monthly Report No. 038

May 31, 2024 – June 27, 2024

## KAPALAMA CONTAINER TERMINAL WHARF AND DREDGING

Job HC 10498

Honolulu Harbor, Oahu, Hawaii

Prepared for:



State of Hawaii  
Department of Transportation  
Harbors Division

Prepared by:



Harbors Project No. H.C. 10498

---

# MONTHLY REPORT NO. 038

Period of May 31 – June 27, 2024  
Kapalama Container Terminal Wharf and Dredging  
Honolulu Harbor, Oahu, Job HC 10498  
State of Hawaii, Department of Transportation, Harbors Division  
Contract No. 69245

---

## A. PROJECT SUMMARY

Project:	Kapalama Container Terminal Wharf and Dredging
Project Number	HC 10498
Location	Honolulu Harbor, Oahu
Owner	State of Hawaii Department of Transportation; Harbors Division
Design Consultant	Moffatt and Nichol
General Contractor	Kiewit Infrastructure West Co.
Construction Manager	Yogi Kwong Engineers, LLC
Notice to Proceed Date	January 4, 2021
Contract Completion Date	<del>April 4, 2024</del> (To Be Amended) July 31, 2025 (Pending New Contract Amendment)

## B. CURRENT PROJECT SCHEDULE – ALL DATES SUBJECT TO CHANGE WITHOUT NOTICE (See next page)

MAJOR ACTIVITY:	COMPLETION DATES AS OF KIWC MARCH 2024 SCHEDULE:					DD-MON-YYYY: ACTUAL COMPLETION DATE (Month Year) = Anticipated Completion Date** [NOTE: <u>ALL</u> ANTICIPATED DATES ARE SUBJECT TO CHANGE WITHOUT NOTICE]
	PIER 41	PIER 42	SNUG HARBOR	PIER 43	HC 10502 (Ph 1)	
HDD Submarine Water Line - Completed	N/A	N/A	N/A	21-July-2023	N/A	
<i>Mass Grading</i>	13-May-2021	06-July-2021	N/A	8-Aug-2023	N/A	
Landside Demolition - Completed	13-April-2021	27-April-2021	N/A	16-Feb-2022	N/A	
In-Water Demolition - Completed	29-Oct-2021	N/A	19-Nov-2021	N/A	N/A	
<i>Stone Columns (Pre-drill)</i>	06-Oct-2021	5-Aug-2021	6-July-2022	31-Aug-2023	N/A	
<i>Stone Columns (Installation)</i>	14-Oct-2021	12-Aug-2021	6-July-2022	01-Sept-2023	N/A	
<i>Combi-Wall (Pre-Drill)</i>	29-Oct-2021	17-Dec-2021	29-Sept 2022	22-Sept-2023	N/A	
<i>Combi-Wall (Installation)</i>	28-Sept-2022	28-April-2023	4-Nov-2022	01-Dec-2023	N/A	
<i>Surcharge Period</i>	28-April-2023	N/A	<i>(January 2025)</i>	N/A	N/A	
<i>Tie Rods</i>	25-April-2023	16-April-2024	<i>(November 2024)</i>	<i>(August 2024)</i>	N/A	
<b>Capping Beam</b>	<b><i>(May 2024)</i></b>	<b><i>(December 2024)</i></b>	<b><i>(July 2024)</i></b>	<b><i>(August 2024)</i></b>	N/A	
<i>Tie Rod Deadman</i>	22-Dec-2022	N/A	N/A	N/A	N/A	
<b>Land Side Crane Rail Beam</b>	N/A	<b><i>(January 2025)</i></b>	8-Aug-2023	<b><i>(May 2024)</i></b>	N/A	
<i>Water &amp; Electrical Utilities</i>	<i>(June 2024)</i>	<i>(November 2024)</i>	<i>(March 2025)</i>	<i>(September 2024)</i>	N/A	
<i>Drainage Structures</i>	<i>(August 2024)</i>	<i>(March 2025)</i>	<i>(February 2025)</i>	<i>(July 2024)</i>	N/A	
<b>Water Side Crane Rail Beam</b>	N/A	<b><i>(January 2025)</i></b>	<b><i>(September 2024)</i></b>	<b><i>(December 2024)</i></b>	N/A	
<i>Concrete Tie-Beam</i>	N/A	<i>(January 2025)</i>	<b><i>(November 2024)</i></b>	<i>(February 2025)</i>	N/A	
<b>Crane Rails Installed</b>	N/A	<b><i>(March 2025)</i></b>	<b><i>(April 2025)</i></b>	<b><i>(June 2025)</i></b>	N/A	
<b>Crane Substation Switchgear &amp; Transformer Delivered to KCT</b>	N/A	29-Sept-2023 [Transformer] 5-Jan-2024 [Switchgear]	N/A	N/A	N/A	
<b>Crane Substation</b>	N/A	<b><i>(May 2025)</i></b>	N/A	N/A	N/A	
<b>Dredging [at bulkhead wall]</b>	31-Jan-2024	28-Mar-2024	<b><i>(December 2024)</i></b>	<b><i>(December 2024)</i></b>	N/A	
<b>Dredging [offshore]</b>	9-Jan-2024	<b><i>(May 2024)</i></b>	<b><i>(January 2025)</i></b>	<b><i>(September 2024)</i></b>	N/A	
<b>Fenders Installed</b>	<b><i>(December 2024)</i></b>	<b><i>(June 2025)</i></b>	<b><i>(May 2025)</i></b>	<b><i>(July 2025)</i></b>	N/A	
<b>PCC Pavement</b>	<b><i>(November 2024)</i></b>	<b><i>(March 2025)</i></b>	<b><i>(April 2025)</i></b>	<b><i>(May 2025)</i></b>	<b><i>(June 2024)</i></b>	
<i>Cathodic Protection</i>	<i>(October 2024)</i>	<i>(May 2025)</i>	<i>(May 2025)</i>	<i>(June 2025)</i>	N/A	
<i>Pavement Striping</i>	<i>(December 2024)</i>	<i>(June 2025)</i>	<i>(May 2025)</i>	<i>(July 2025)</i>	<i>(August 2024)</i>	
<b>TWIC Fencing</b>	N/A	N/A	N/A	<b><i>(July 2025)</i></b>	<b><i>(August 2024)</i></b>	
<b>PROJECT COMPLETION</b>	<b><i>(JULY 31, 2025)</i></b>					

---

## MONTHLY REPORT NO. 038

Period of May 31 – June 27, 2024  
Kapalama Container Terminal Wharf and Dredging  
Honolulu Harbor, Oahu, Job HC 10498  
State of Hawaii, Department of Transportation, Harbors Division  
Contract No. 69245

---

### C. ACTIVITIES

#### **Work observed at Pier 41:**

- KIW carpentry crew stripped the forms from P7 of the trench drain and patched the honeycombs.
- KIWC Bridge and Marine crew emptied the dredged material from the dump scow.
- KIWC civil crew backfilled, compacted and tested the fill placement for P1 of the CWCB.

#### **Work Observed at Pier 42:**

- KIWC civil crew backfilled and compacted at CWCB P14 and P16 (CWCB Sta 7+00 to Sta 9+00).
- KIWC continued drilling for CIDH installation for the WSCR. B.
- KIWC continued in-water dredging at approximately Sta. 15+00 to 17+00.
- KIWC drilled CIDH shafts 41-A4-36 and 37-A4-36.
- KIWC poured 17 CIDH 36" shaft locations of area 4.

#### **Work Observed at Pier 43:**

- HRSPI crew installed the rebar cage for P22 of the CWCB.
- KIWC and PEC continued installation of P21 of the cap beam.
- KIWC carpentry crew continued to pre-strip the forms in P19 of the CWCB.
- KIWC carpentry crew placed concrete in P20 of the capping beam.
- KIWC installed formwork for capping beam pours #21 and 22 (CWCB Sta 2+11 to 3+69).
- KIWC poured the RCJ for W-2.
- KIWC started excavating for P8 of the LSCR. B.

#### **Work Observed at Snug Harbor:**

- Kokua Geotech on site for SPT soil sampling.

#### **Work Observed at PCCP:**

- HRSPI crew continued to correct the rebar laps of the 36-inch CIDH cage.

---

# MONTHLY REPORT NO. 038

Period of May 31 – June 27, 2024  
Kapalama Container Terminal Wharf and Dredging  
Honolulu Harbor, Oahu, Job HC 10498  
State of Hawaii, Department of Transportation, Harbors Division  
Contract No. 69245

---

## D. AERIAL PHOTOGRAPH



November 2023



April 2024

---

## MONTHLY REPORT NO. 038

Period of May 31 – June 27, 2024  
Kapalama Container Terminal Wharf and Dredging  
Honolulu Harbor, Oahu, Job HC 10498  
State of Hawaii, Department of Transportation, Harbors Division  
Contract No. 69245

---

E. **PROJECT PHOTOGRAPHS**  
(See attached Sheets)

H.C. 10498 KAPALAMA CONTAINER TERMINAL YARD WHARF AND DREDGING  
MONTHLY REPORT NO. 038  
MAY 31 TO JUNE 27, 2024



PCCP: HRSPI crew continued to correct the rebar cage of the 36-inch CIDH



Pier 41: MPE soil technician took density tests of the compacted fill for the third lift



KIWC backfilling the waterside of trench drain 3 on Pier 41



Pier 41: KIWC mason crew continued to concrete dry finished the inner walls of Trench Drain 3



Pier 41: The Sakai SW300 double drum vibratory roller was used to compact the backfill material on the east side of the trench drain



MPE performing slump loss testing for the CIDH mix

H.C. 10498 KAPALAMA CONTAINER TERMINAL YARD WHARF AND DREDGING  
MONTHLY REPORT NO. 038  
MAY 31 TO JUNE 27, 2024



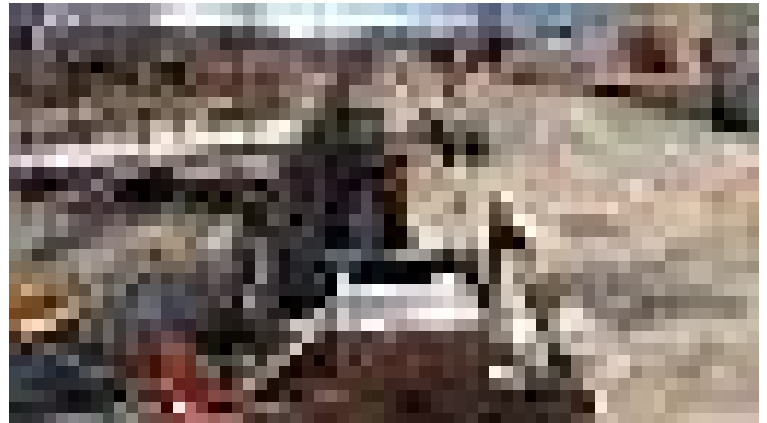
PCCP: HRSPI crew continued to correct the rebar laps for the 36-inch CIDH cage



Pier 41: KIWC mason crew continued to patch the inner walls of the trench drain from STA 1+00 to STA 2+00



Pier 41: KIWC civil crew continued to use the CAT 305 mini excavator to scarify the fill from STA 4+00 to STA 4+50



Pier 43: KIWC carpentry crew (Kaimi's) placed burlap material and allowed free running water for the concrete cure of the water siphon



KIWC finished pouring the W-2 RCJ and setup the curing system



KIWC placing 3B fine material into the hole after KIWC reached the lap splice section of the remaining shaft 58-A4-36



H.C. 10498 KAPALAMA CONTAINER TERMINAL YARD WHARF AND DREDGING  
MONTHLY REPORT NO. 038  
MAY 31 TO JUNE 27, 2024



Jun 8, 2024 at 6:49:18 AM  
Honolulu HI 96817  
United States

HRSPI on site adjusting 36" CIDH rebar cages on the PCC



Jun 8, 2024 at 9:35:30 AM  
Honolulu HI 96817  
United States

KIWC continued drilling location 58-A4-36 on Pier 42

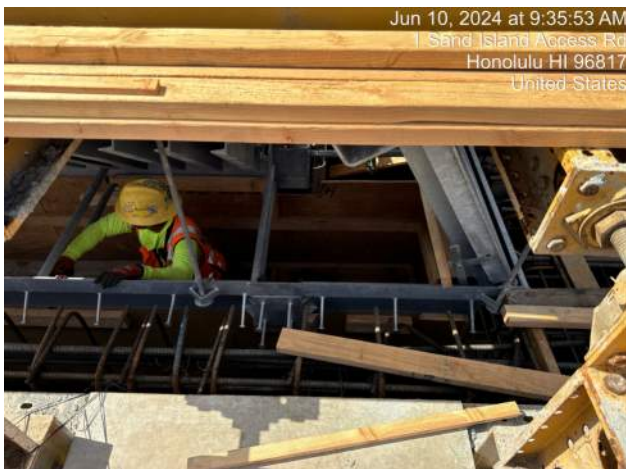


Jun 8, 2024 at 2:26:18 PM  
1-3 Sand Island Access Rd  
Honolulu HI 96817  
United States

KIWC progress excavating for P8 of the LSCR on Pier 43



Pier 41: KIWC Bridge and Marine crew unloading the dredged material from the dump scow



Jun 10, 2024 at 9:35:53 AM  
1 Sand Island Access Rd  
Honolulu HI 96817  
United States

KIWC installing formwork for P21 of the cap beam on Pier 43



Jun 10, 2024 at 9:27:39 AM  
1 Sand Island Access Rd  
Honolulu HI 96817  
United States

PE using the 3.5" diameter mandrel to test the 4" conduit

H.C. 10498 KAPALAMA CONTAINER TERMINAL YARD WHARF AND DREDGING  
MONTHLY REPORT NO. 038  
MAY 31 TO JUNE 27, 2024



Pier 42: KIWC foundation crew installing the rebar cage for CIDH # 46-A4-36



PCCP: PASHA maintenance building - KIWC civil crew (John's) pot holed and exposed the location of the geogrid



KIWC curing shaft location 46-A4-36



Pier 42: KIWC mason crew grouted the form tie holes of P14 of the CWCB



View of shaft 43-A4-36 after pulling the casing



KIWC continued excavating for P8 of the LSCR on Pier 43

H.C. 10498 KAPALAMA CONTAINER TERMINAL YARD WHARF AND DREDGING  
MONTHLY REPORT NO. 038  
MAY 31 TO JUNE 27, 2024



Pier 41: KIWC Bridge and Marine crew used the CAT 740 rock truck to unload the dredged material into the stockpile



Pier 43: Collected soil samples for Proctor and gradation tests from P7/P8 LSCRB mass excavation



KIWC prepping for the mud mat pour for the LSCRB P8 on Pier 43



Pier 42: KIWC Foundation crew resumed drilling CIDH #31-A4-36



Pier 43: KIWC civil crew (Micah's) cleaned the bottom of WL-2 before placing #3B fine gravel



Pier 42: KIWC Foundation crew used the drilling bucket to drill the shafts

H.C. 10498 KAPALAMA CONTAINER TERMINAL YARD WHARF AND DREDGING  
MONTHLY REPORT NO. 038  
MAY 31 TO JUNE 27, 2024



KIWC stripping formwork from capping beam pour #19.



KIWC topping off location 31-A4-36 on Pier 42



PCCP: PASHA maintenance building - The civil crew (John's) crew continued to scarify the existing subgrade to remove the damaged geogrid



KIWC excavating around CIDH shafts for the pier 43 LSCRB on pier 43.

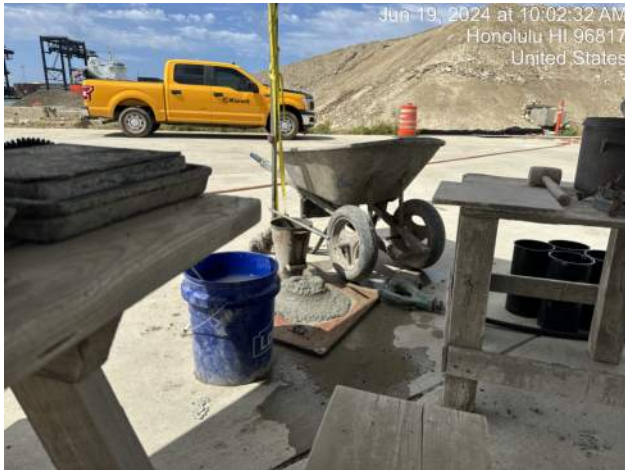


MPE testing truck 1 of the CIDH pour



Pier 42: KIWC DB Seattle continued in water dredging

H.C. 10498 KAPALAMA CONTAINER TERMINAL YARD WHARF AND DREDGING  
MONTHLY REPORT NO. 038  
MAY 31 TO JUNE 27, 2024



MPE performing concrete testing for CIDH truck 1



View of shaft 52-A4-36 prior to pulling any casing



Pier 42: Appearance of the dump scow with coral boulders in the hold



KIWC pouring concrete for capping beam pour #21.



MPE testing truck 2 of the CIDH pour



Pier 43: KIWC mason crew applied concrete curing compound for pour #P21 of the CWCB

H.C. 10498 KAPALAMA CONTAINER TERMINAL YARD WHARF AND DREDGING  
MONTHLY REPORT NO. 038  
MAY 31 TO JUNE 27, 2024



KIWC chipping down CIDH shafts to top elevation on pier 43.



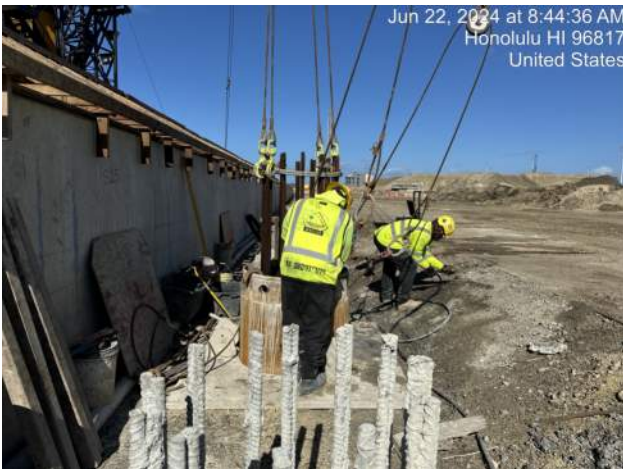
PCCP: PASHA- maintenance building; The crew used the CAT 305 mini excavator to fine grade the block out



Snug Harbor: Kokua Geotech mobilized to Boring B101 to B101A offset 20' south



KIWC placing a rebar cage into location 23-A4-36 on Pier 42



KIWC placing the rebar cage for location 25-A4-36



KIWC continued in-water dredging from Sta. 13+00 to 14+00 on Pier 42

H.C. 10498 KAPALAMA CONTAINER TERMINAL YARD WHARF AND DREDGING  
MONTHLY REPORT NO. 038  
MAY 31 TO JUNE 27, 2024



KIWC setting 36" CIDH rebar cages using the Liebherr crane.



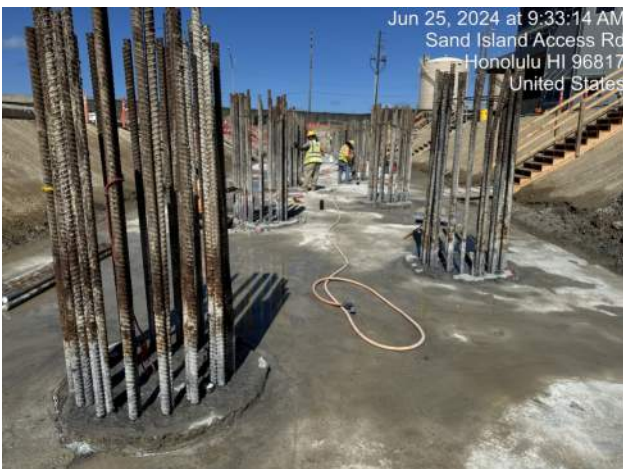
KIWC pouring concrete into CIDH shaft 27-A4-36.



Pier 41: KIWC mason crew grouted the form tie holes of P1 of the CWCB



MPE performing compaction tests on the CWCB backfill.



Jun 25, 2024 at 9:33:14 AM  
Sand Island Access Rd  
Honolulu HI 96817  
United States  
KIWC performing shaft top prep for P7 and P8 of the LSCRB on Pier 43



Pier 42: KIWC DB Seattle continued in water dredging

H.C. 10498 KAPALAMA CONTAINER TERMINAL YARD WHARF AND DREDGING  
MONTHLY REPORT NO. 038  
MAY 31 TO JUNE 27, 2024



KIWC drilling CIDH shaft 51-A4-36 on pier 42.



MPE performed compaction test of lift 2 of P18 of the cap beam backfill (results in question due to results not matching the proctor)



Pier 41: KIWC mason crew continued to patch the honeycombs of the exterior wall of P7 of the trench drain



KIWC pouring concrete into CIDH shaft 37-A4-36.



Pier 41: KIWC mason crew continued to grout the form tie holes of trench drain 3



Pier 41: KIWC mason crew continued to grout the form tie holes of trench drain 3